



# Product overview

## EVBox Troniq 100



- Works as a standalone, all integrated charger
- DC charging connectors are included in the housing
- Internal AC / DC converter
- Onboard DC controllers
- EMV payment terminal optional upon further consultation
- Smart charging functionality allows:
  - Remote set up of Max. amperage
  - Load balancing between stations



## General specifications

### Charging modes

#### Mode 4 (DC charging)

CCS1 and CHAdeMO up to 200 A - 500 VDC

### Connector type

#### Mode 4

CCS1 and CHAdeMO (JEVS G105)

### Cable length\*

#### Mode 4

Effortless: up to 11.5 feet of standard reach  
Smart Cable Management activated: up to 14.5 feet

### Structure and physical properties

#### Enclosure material

#### Enclosure ratings

#### Operating temperature

#### Ambient temperature

#### Operating humidity

#### Cooling

#### Mounting method

#### Maximum installation height

Galvanized steel (structure), aluminum (casing)

IP54 / IK10 / NEMA 3R

-22°F to +122°F (-30°C to +50°C)

-40°F to +158°F (-40°C to +70°C)

5% to 95% non-condensing

Forced ventilation

Floor / Ground (recommended with the optional clamping-sealing kit)

6560 feet (2000 meters)

#### Footprint (W x H x D)

#### Weight

#### Colors

39.2" x 86.1" x 36.0"

2,100 lb

Front: Graphite grey (RAL 7024)

Sides: White aluminum (RAL 9006)

Back: Metallic (RAL 9022)

### Connectivity

#### Authorization

#### Status indication

#### HMI

#### Communication standard

#### Communication protocol

RFID/NFC (ISO 14443, ISO 18092, ISO 15693, ISO 18000-3, Calypso, Mifare

Ultralight C, -Classic, -Desfire)

LED strips charging indicators

7" anti-vandalism LCD color touchscreen with integrated contactless reader

4G/LTE

OCPP 1.5, OCPP 1.6S, OCPP 1.6J, ready for update to OCPP 2.0

### Certifications

UL, EMC Directive 2014/30/EU, Low Voltage Directive 2014/35/EU, EN/IEC 61851-1, EN/IEC 61851-21-2, EN/IEC 61851-22, EN/IEC 61851-23

\*Exact length is to be confirmed

# Electrical properties

## AC input

<b>Voltage range</b>	480 VAC +/- 10%
<b>Number of phases</b>	3 P + PE
<b>Frequency</b>	60 Hz
<b>Input rating</b>	145.5 kVA
<b>Nominal input current</b>	133 A
<b>Maximal input current</b>	178 A
<b>Power factor</b>	> 0.98
<b>Efficiency</b>	95%
<b>Grounding system</b>	IT, TT or TN-S
<b>Stand-by power consumption (20 °C)</b>	158 VA

## DC output

<b>Output power</b>	Up to 100 kW
<b>Output voltage range</b>	50 VDC – 500 VDC
<b>Output current range</b>	Up to 200 A

## Electrical protections

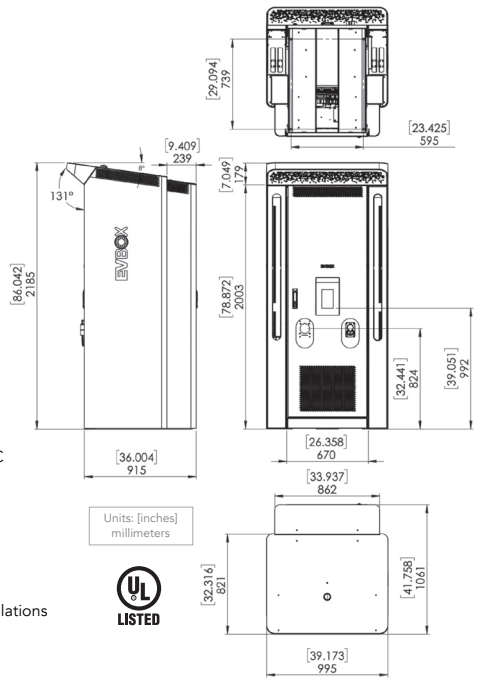
### Internal electrical protection

Thermal-magnetic circuit breakers: 150A for plugs, 6A for electronics

### Required circuit breakers upstream

Switch / disconnecting circuit breaker capable (min 220 A)

A transient voltage surge suppression in accordance with the local regulations



**Plant one tree for every charging port installed**

For every EVBox charging port installed, we donate a tree to help reforest an area affected by climate change. Lend a hand in helping create a greener future by choosing EVBox.

Note: Technical specifications are subject to change pending product development.

Copyright © 2020 EVBox North America Inc. Troniq®, EVBox® and the EVBox logo are registered trademarks. All rights reserved. EVBox has compiled this document to the best of its knowledge but does not warrant that all information provided is error-free; EVBox does not accept liability in that respect. All specifications are approximates only. The limited warranty conditions are stated in the applicable EVBox general terms and conditions. EVBPL\_DC100\_EN\_092020 v1.8 © EVBox North America Inc.

