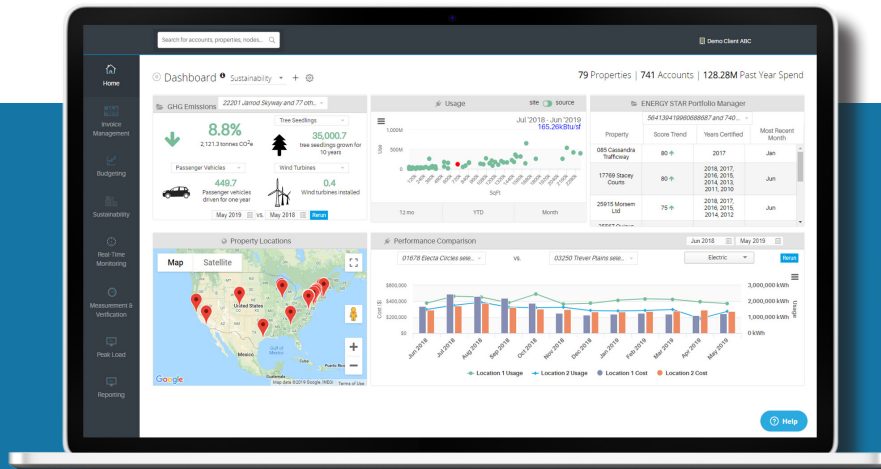


Energy Management Solution



By Efficient Power Tech



Where Energy Technology Drives Better Business

The Issue: Buildings in the United States spend >\$450 billion annually on energy and represent 40% of national energy consumption and emissions.

The Solution: Efficient Power Tech's **eReveal** makes energy data management and monitoring easier by offering your team a deeper level of energy analytics for today's requirements.

The Benefit: Efficient Power Tech's **eReveal** solves issues such as high administrative costs that come with manual reporting, siloed data between numerous service providers, difficulty identifying ROI of efficiency projects, sustainability reporting requirements, and more...



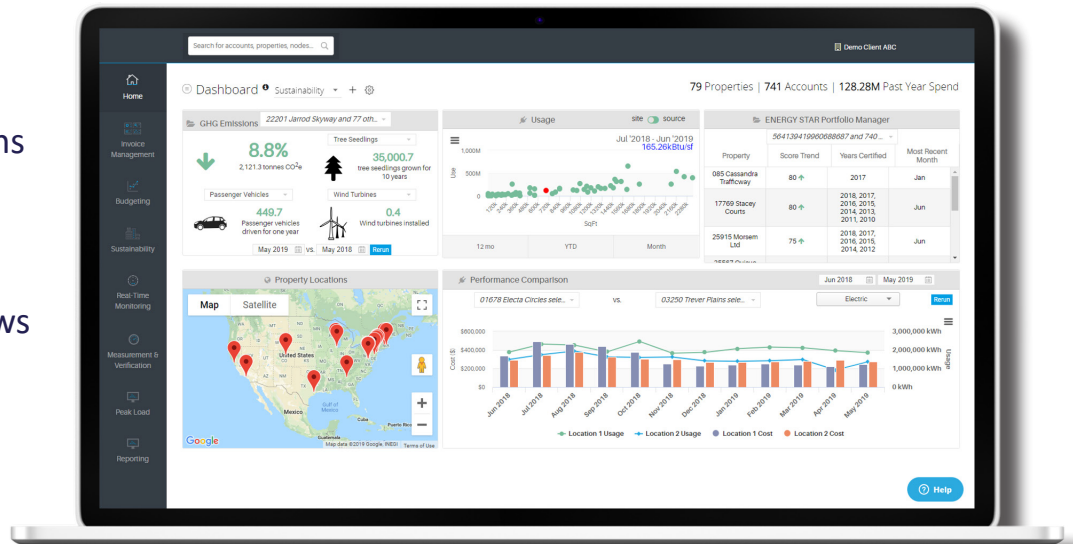
ENERGY MANAGEMENT FEATURES:

CUSTOMIZABLE DASHBOARD

High level view of your individual KPIs

20+ different widget options for your dashboard

Create, maintain, & share customized dashboard views (i.e. for specific users, sustainability, accounting, engineering, etc.)

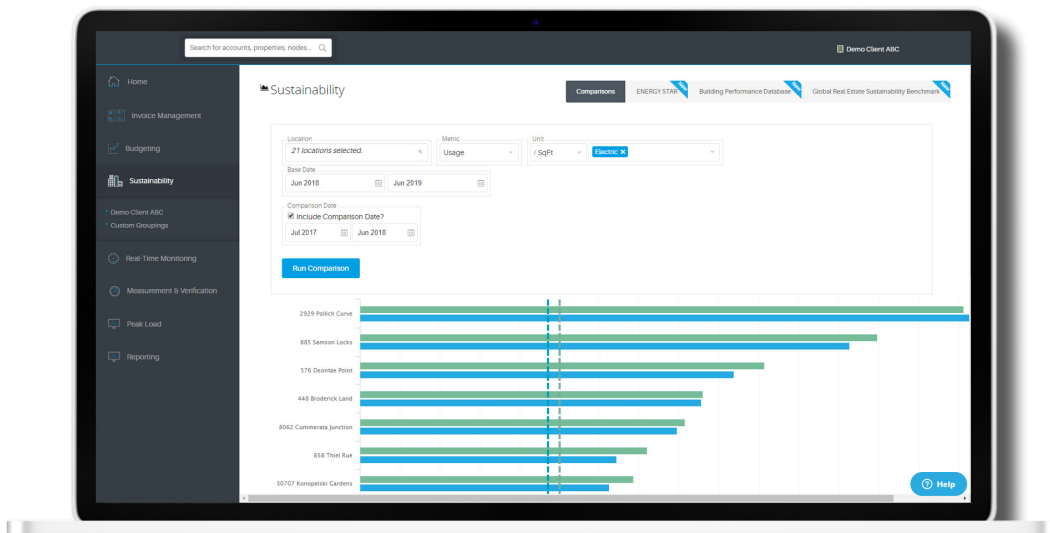


SUSTAINABILITY

Custom benchmarking comparison of buildings and regions (consumption/demand/cost totals and KPIs)

Integration with ENERGY STAR, GRESB, Department of Energy BPD

Save “custom groupings” manually or determined by property characteristics

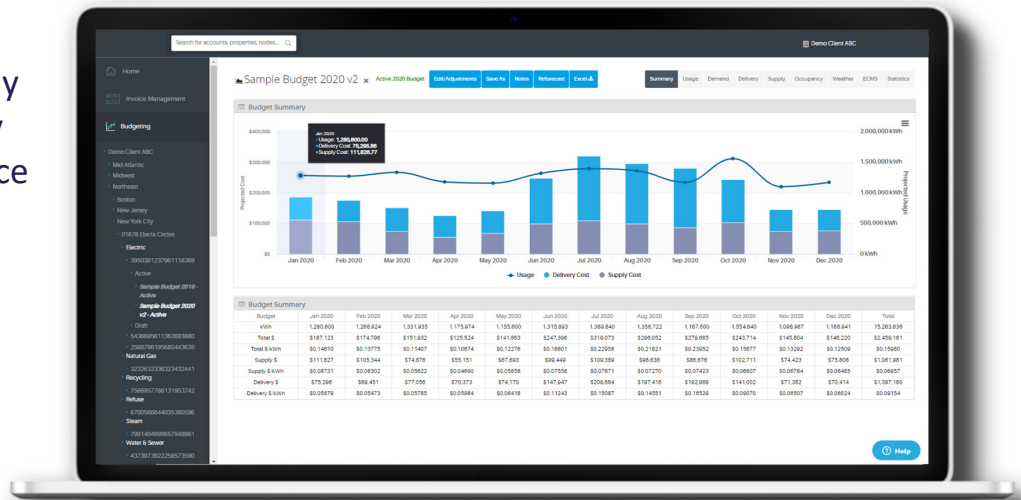


UTILITY BUDGETING

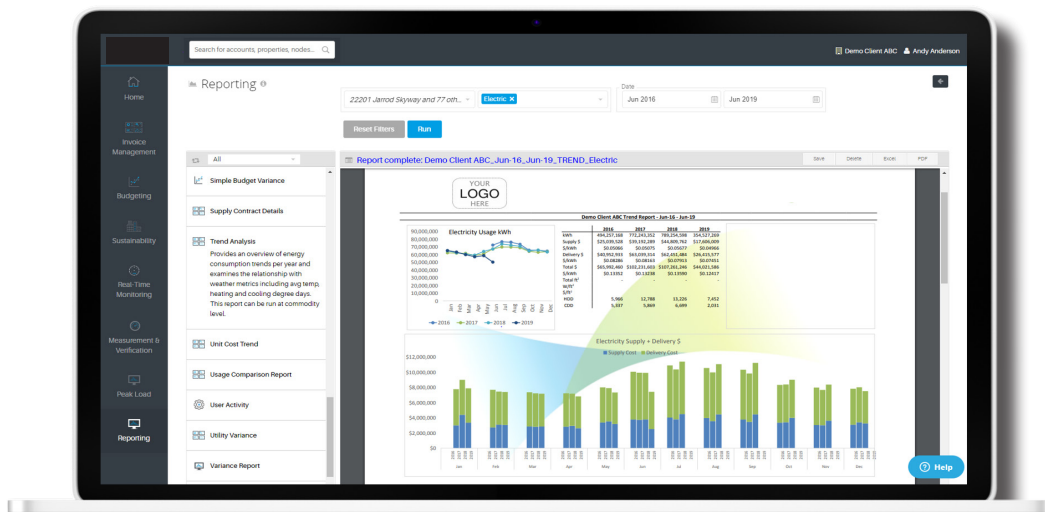
Budget accurately based on proprietary consumption, forecasting algorithm, supply market predictions, delivery tariff rates, and Public Service Commission rate cases

Understand the impact of lease activity, occupancy, weather, and efficiency projects

Allocate capital efficiently



REPORTING



Automated monthly reporting distribution

Reports native to Excel — formatting never altered upon export

Custom report development

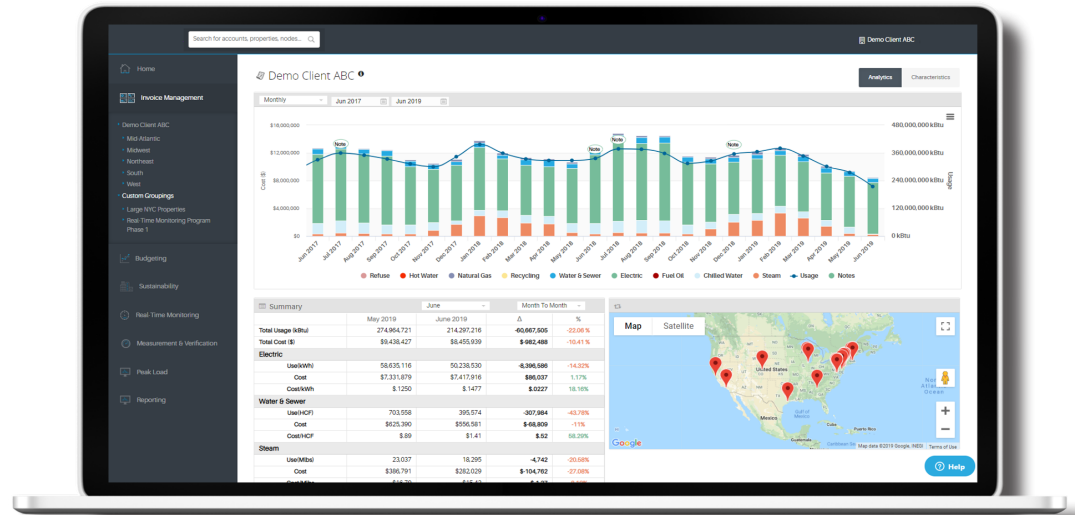
AUTOMATED INVOICE DATA CONSOLIDATION

Web-based centralized platform

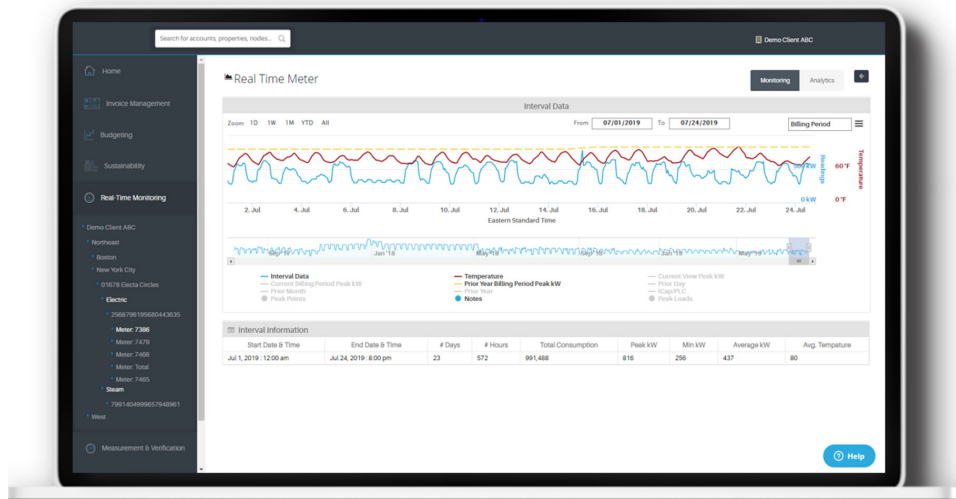
Building/facility region, portfolio consolidation

Multiple currency tracking

Unit conversions



REAL-TIME MONITORING



Fully leverage real-time data by analyzing it alongside actual utility bill data

Multiple visualizations giving the ability to identify energy efficiency and savings opportunities

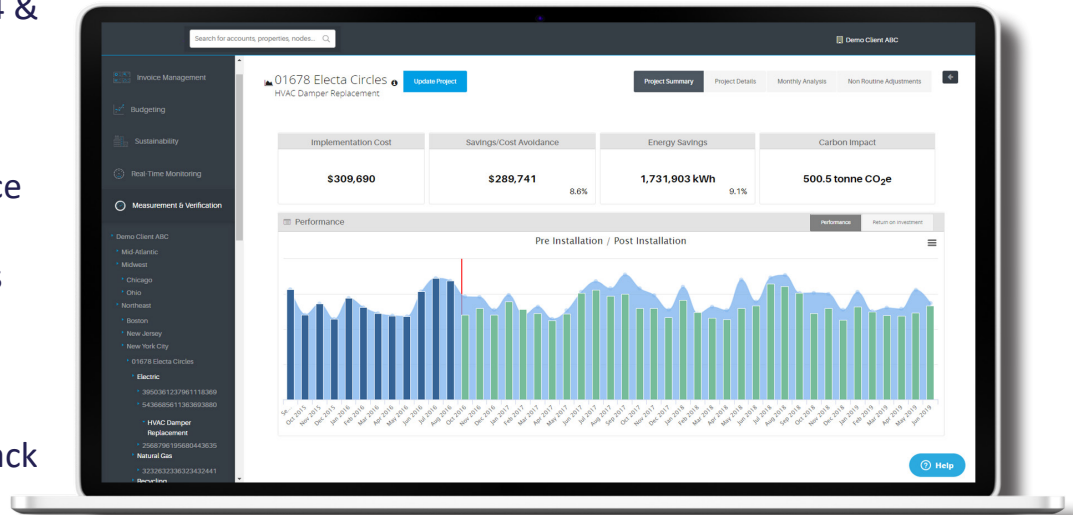
MEASUREMENT & VERIFICATION

ASHRAE Guideline 14-2014 &
IPMVP Compliant Option
B & C

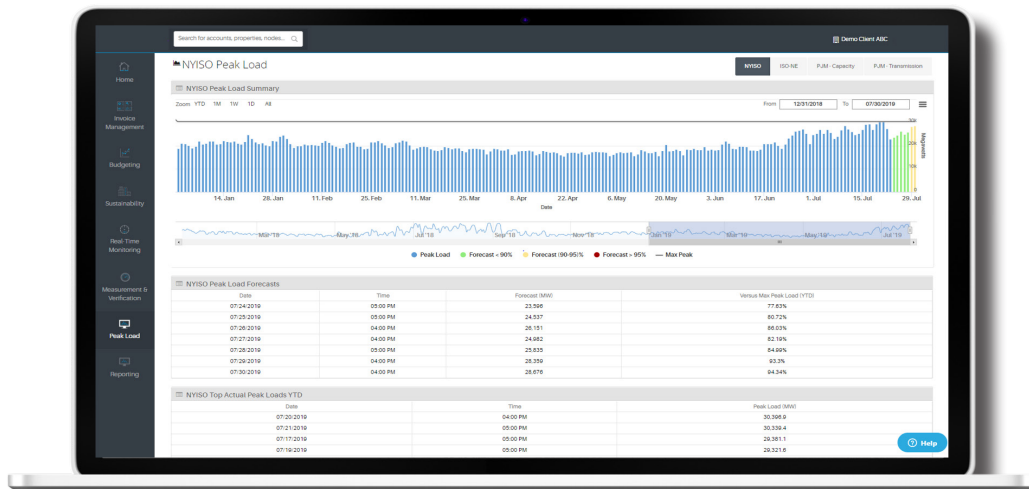
Track multiple ECMs at once

Normalize project analyses
for weather, billing period
length, occupancy, & more

Verify performance and track
ROI



PEAK LOAD NOTIFICATIONS



Predictive analytics alert you
when peak load hours are
likely to occur

Track, measure, and verify
the performance of your peak
load management efforts

About Efficient Power Tech

Efficient Power Tech was formed in 2015 to provide all commercial and industrial businesses with the same high quality advanced energy technologies available to their mega-large competitors at affordable price points. Our products and services can make an immediate positive impact on a business's ability to control and manage how they buy and use energy. Measurement, Verification, Low Capex, Services (Design, integration, Procurement, Installation, Financing) all combine to give your facility the resources necessary to finally move the electric meter in your direction.

Where Energy Technology Drives Better Business – Welcome To The Energy Future

To learn more, visit our website: www.efficientpowertech.com