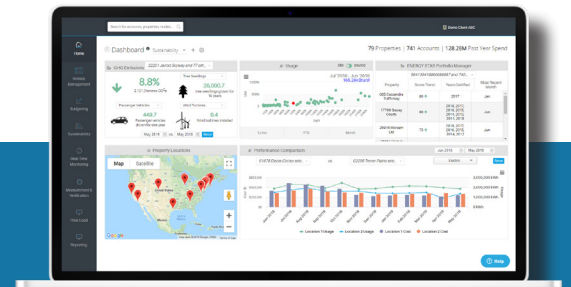


Energy Management Solution



By Efficient Power Tech



Real-Time Monitoring Module

eReveal's Real-Time Monitoring Module allows you to fully leverage your real-time energy data by analyzing it alongside your actual utility bills and costs. eReveal supports* the following meter companies:



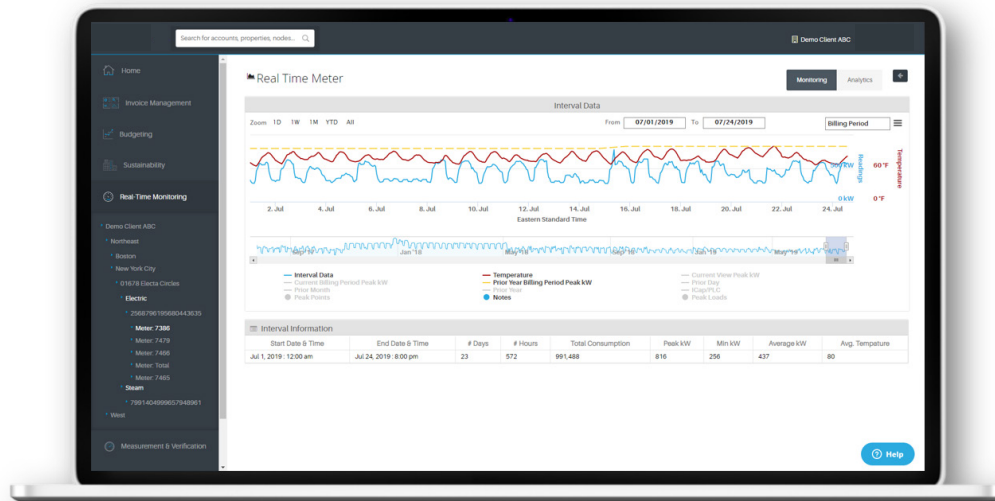
eReveal is hardware agnostic and can be configured to support any interval meter that can pulse out its data digitally. Efficient PowerTech does not handle installation, this can be done by your local electricians.



Real-Time Monitoring Module Features:

DASHBOARD VIEW

eReveal's Real-Time Monitoring dashboard provides an overview of your meter's interval data in the respective intervals, which can be viewed by current day, week, year, or any selected timeframe, such as "Billing Period". Also, you can easily add or remove any of the data analysis options that are listed below the graph in the various colors (i.e. current billing period peak kW, prior billing period peak kW, etc.)

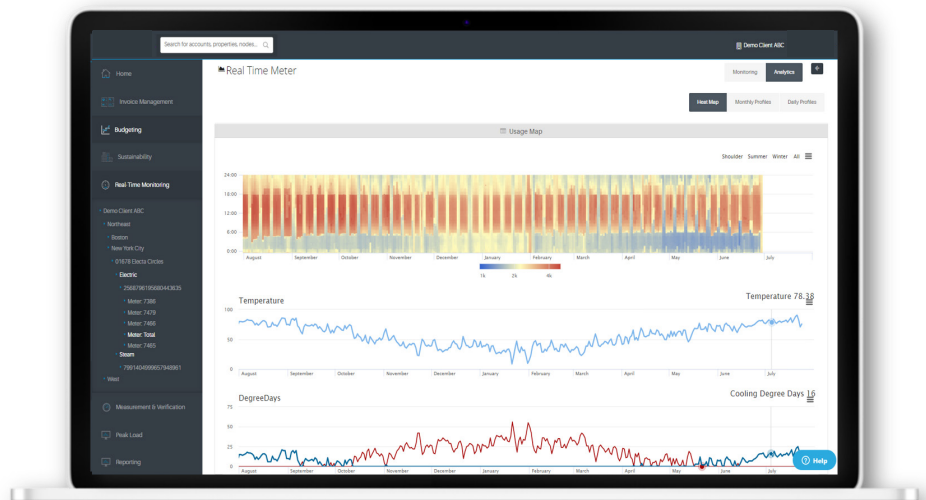


REAL-TIME DATA ANALYTICS

eReveal's Real-Time Monitoring module provides various visualizations giving the ability to identify any type of energy inefficiency and take advantage of opportunities to save.

HEAT MAP ANALYTICS

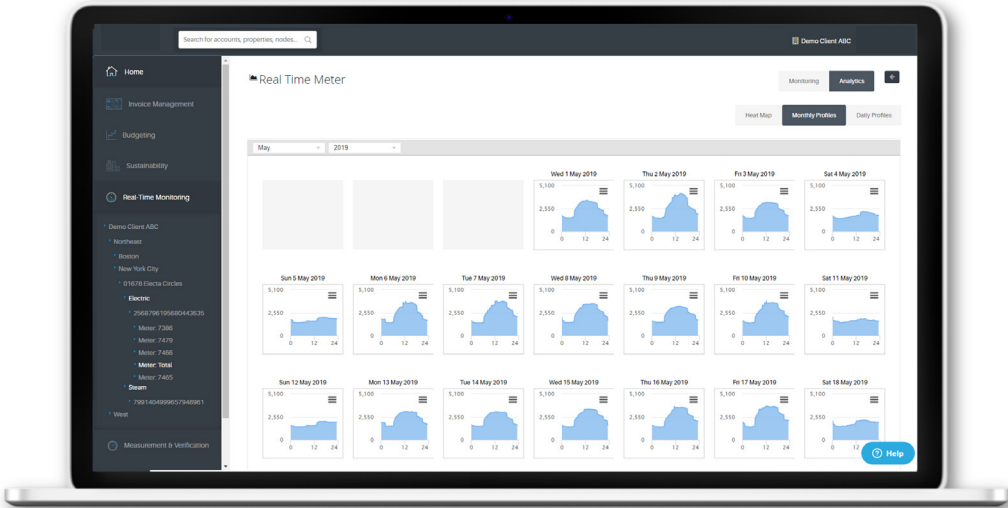
The first visual is the Heat Map. This provides the actual demand, temperature, and heating or cooling degree days for a specific date and time in the respective intervals. This type of visualization makes it simple to spot irregularities in equipment operating times or other operational anomalies. You can download the graphs as images or export to Excel.



REAL-TIME DATA ANALYTICS

MONTHLY PROFILES ANALYSIS

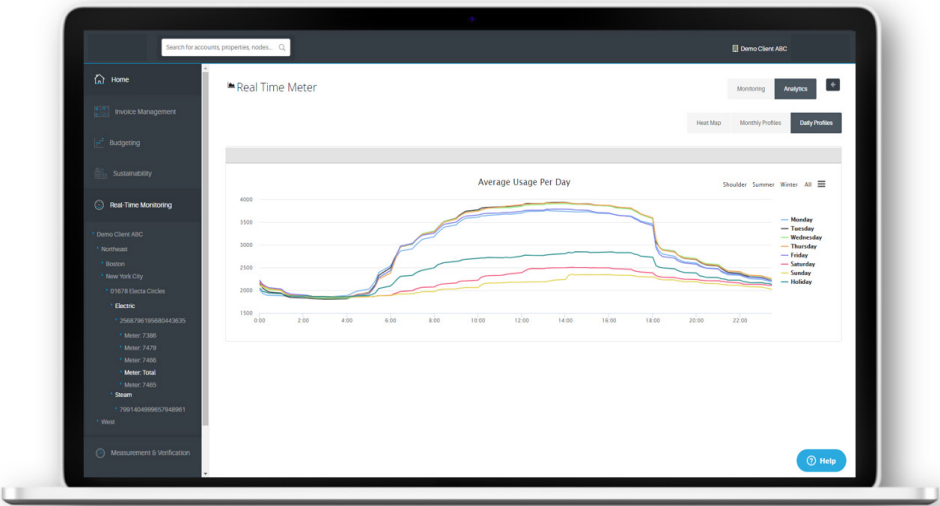
The monthly profiles analysis uses the same interval data but creates a different visualization. By breaking down usage each day over the course of the month, the user can easily notice if there are any inconsistencies in how weekday or weekend operations compare against each other. Each daily image can be downloaded as an image.



REAL-TIME DATA ANALYTICS

DAILY PROFILES ANALYSIS

The final visualization, Daily Profiles, graphs the average usage per day for the past 12 months – broken down by summer, winter, or shoulder months. This can be utilized to ensure daily usages are meeting expectations (e.g. lower usage on weekends and holidays vs. business days). This graph can be downloaded as an image or exported to Excel.



About Efficient Power Tech

Efficient Power Tech was formed in 2015 to provide all commercial and industrial businesses with the same high quality advanced energy technologies available to their mega-large competitors at affordable price points. Our products and services can make an immediate positive impact on a business's ability to control and manage how they buy and use energy. Measurement, Verification, Low Capex, Services (Design, integration, Procurement, Installation, Financing) all combine to give your facility the resources necessary to finally move the electric meter in your direction.

Where Energy Technology Drives Better Business – Welcome To The Energy Future

To learn more, visit our website: www.efficientpowertech.com