

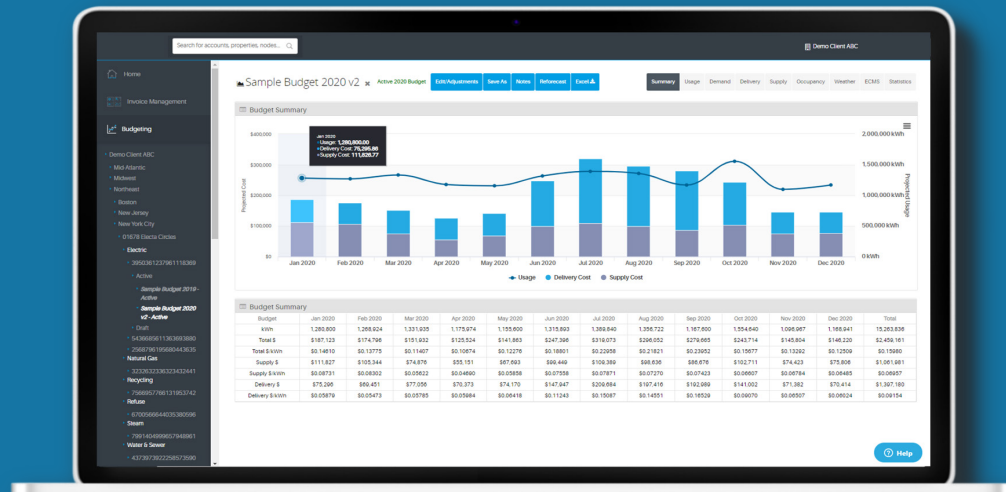
Energy Management Solution



By Efficient Power Tech

Budgeting Module

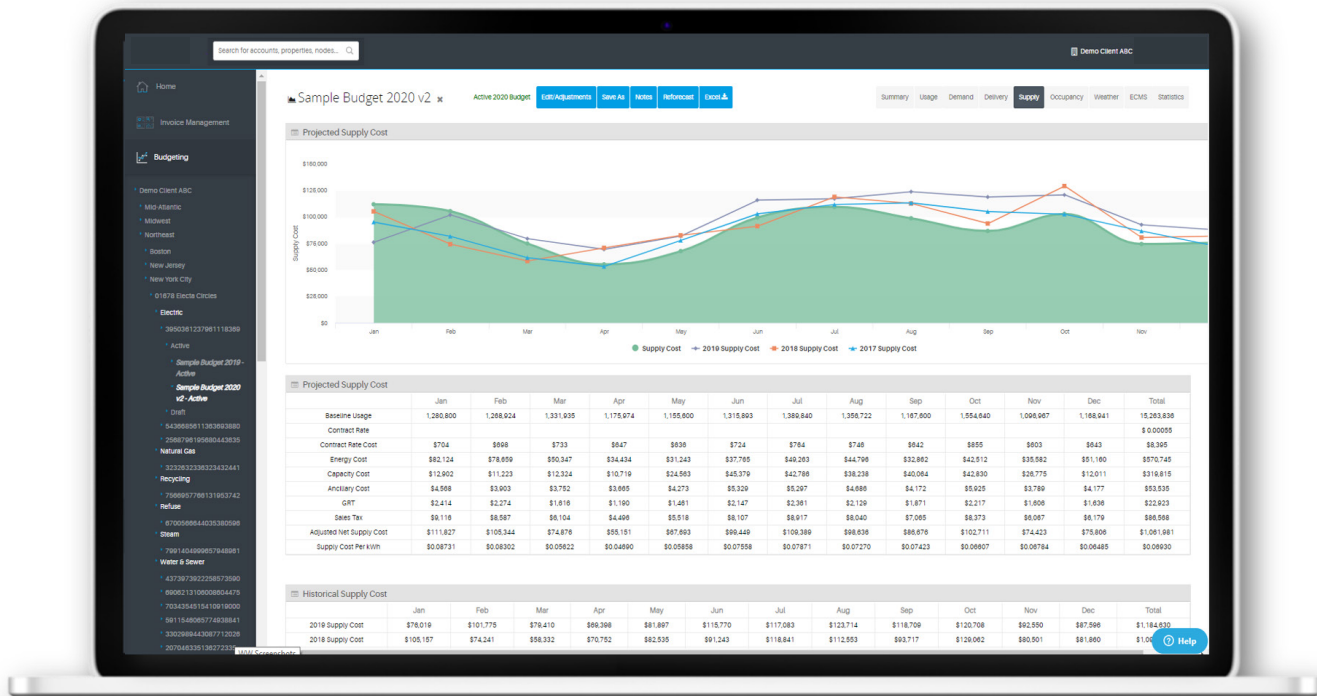
eReveal's Budgeting Module offers a comprehensive utility budgeting solution, allowing clients to obtain data-driven, defensible, and accurate forecasts of their energy costs and consumption.



Budgeting Module Features:

DELIVERY & SUPPLY FORECASTS

Usage and Demand forecasts incorporate historical data, in addition to correlations with weather, occupancy metrics, and/or widget production, allowing for adjustments for business forecasts (occupancy, production) and energy conservation measures. Delivery rates are forecast based on actual T&D rate calculators, while supply rates are based on existing contract structure (when applicable) and market rates thereafter. Supply rates include granular line item forecasts of both hedged and indexed energy, capacity, transmission, ancillaries, losses, and other ISO specific costs.



BUDGETING ADJUSTMENTS

The ability to make adjustments is crucial in energy forecasting, and within eReveal Budgeting you can make adjustments for Occupancy, Rate Cases, Consumption/Demand (by percentage or absolute adjustments), and Energy Conservations Measures. Custom Rate Adjustments as well as Bulk Upload Adjustments are all possible with eReveal Budgeting.

Adjustments

Occupancy Adjustments

0 Total

Energy Conservation Measure Adjustments

0 Total

Rate Case Adjustments

0 Total

Consumption/Demand Adjustments

0 Total

Additional Line Items

0 Total

Custom Rates

0 Total

Bulk Upload Adjustments

Select an adjustment type on the left to view active adjustments

Cancel

Save Adjustments

Rate Case Adjustment

Month	Delivery Cost %
Jan 2018	
Feb 2018	
Mar 2018	
Apr 2018	
May 2018	
Jun 2018	
Jul 2018	
Aug 2018	
Sep 2018	
Oct 2018	
Nov 2018	
Dec 2018	

Cancel

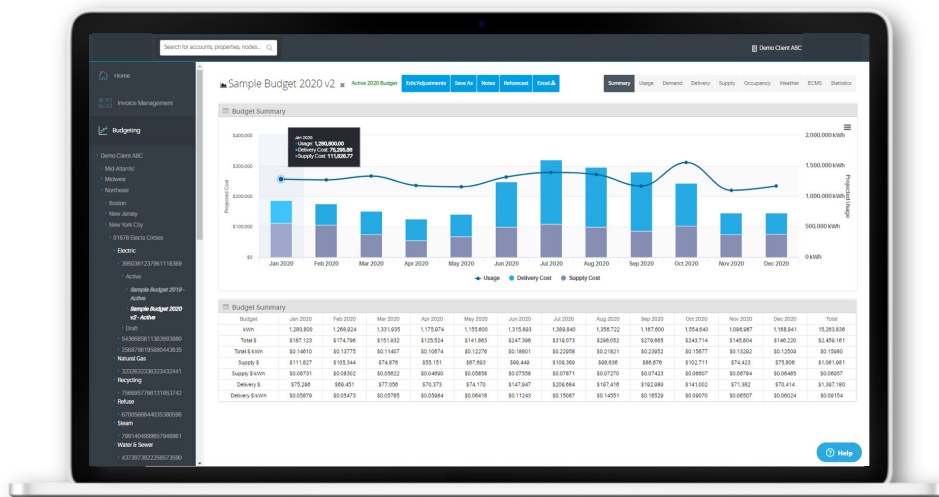
Add & Exit

Rate Case Information

Rate Case adjustments are flat percent adjustments that are applied to the delivery cost. These percentage adjustments will be applied after other adjustments.

BUDGET REFORECASTING

eReveal Budgeting allows for multiple budgets to be created including different assumptions and scenarios to compare impacts quickly and setting final budget as active within the platform. Also within eReveal Budgeting you can quickly reforecast budgets at any time interval desired (monthly, quarterly, etc.), layering in actual energy usage and costs for past budget months.



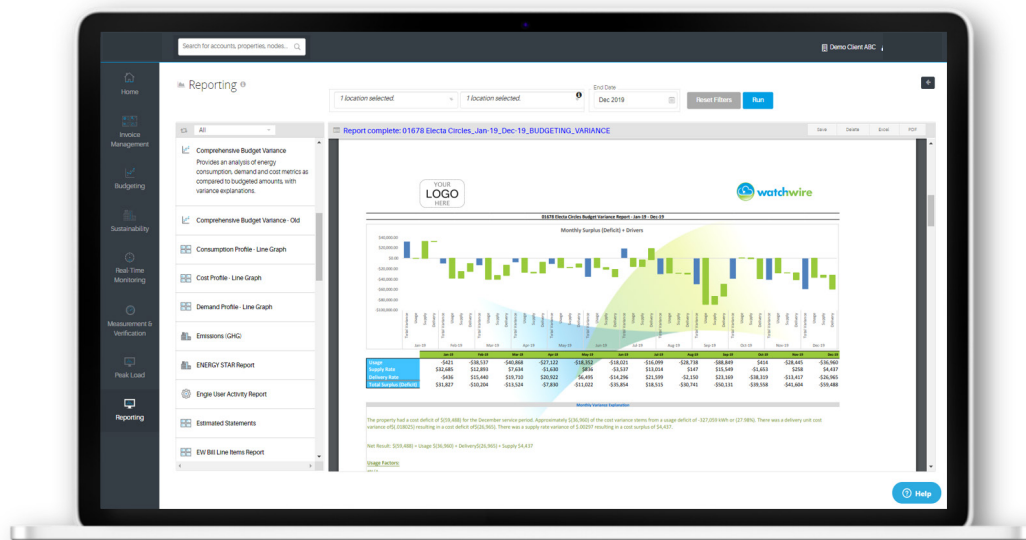
BUDGETING NOTES

eReveal Budgeting has a prepopulated notes section that can be updated to include narrative on how the budgets were calculated and what assumptions and factors were used in calculating the budgets.

Budget Notes	
Usage Projections:	Usage projections are based on a multivariable regression analysis of monthly invoice data compared against daily temperature data, as well as day of week, season, operating hour, and hour of day correlations. EnergyWatch's algorithm analyzes over 2 billion potential models and settles on the projection model with the highest total model adjusted R-squared value. Daily usage is projected for the budget period, then summed per billing period. ↗
Demand Projections:	Monthly demand is based on a monthly regression model comparing demand against heating degree days, cooling degree days, and seasonality. ↗
Delivery Projections:	Monthly usage and demand projections are entered into EnergyWatch's rate calculator to replicate current tariff rates inclusive of all delivery billing components. Known Public Utility Commission rate cases are included where/when applicable. ↗
Supply Projections:	Supply cost projections are based on the Calpine Energy Solutions contract. The following supply components are passed through at market rates: Capacity, Energy, Ancillaries, Line Loss. ↗
Occupancy Adjustments	There are no Occupancy Adjustments for this budget. ↗
Energy Conservation Measure(s) Adjustments	There are no Energy Conservation Adjustments for this budget. ↗
Rate Case Adjustments:	There are no Rate Case Adjustments for this budget. ↗
Taxes:	The following taxes are included: Sales Tax with a rate of 8.8750% applied to only supply costs starting at 04/01/2011 and continuing indefinitely, GRT with a rate of 2.4066% applied to both delivery and supply costs starting at 04/01/2011 and continuing indefinitely, City Tax with a rate of 4.5000% applied to both delivery and supply costs starting at 04/01/2011 and continuing indefinitely. ↗
Additional Notes:	Add New Note

BUDGET VARIANCE REPORTING

eReveal Budgeting includes comprehensive variance reporting to allow for a detailed reconciliation of the components that are impacting the accuracy of the budgets.



About Efficient Power Tech

Efficient Power Tech was formed in 2015 to provide all commercial and industrial businesses with the same high quality advanced energy technologies available to their mega-large competitors at affordable price points. Our products and services can make an immediate positive impact on a business's ability to control and manage how they buy and use energy. Measurement, Verification, Low Capex, Services (Design, integration, Procurement, Installation, Financing) all combine to give your facility the resources necessary to finally move the electric meter in your direction.

Where Energy Technology Drives Better Business – Welcome To The Energy Future

To learn more, visit our website: www.efficientpowertech.com